

## SF SERIES - 60 MINUTE FIRE



The American Security® SF GUN SAFE offers both performance and value. For burglary protection, it has a stout 3/16" - thick steel plate door. For fire protection, it is lined with 3 to 4 layers of drywall that are strategically engineered for optimal fire protection. This enables the SF Gun Safe to pass a verified 60-minute fire test at Intertek, an independent testing laboratory.

### SECURITY

- Four-way bolt work
- 14 massive 1¼" chrome plated bolts
- Anchor holes provided

### FIRE PROTECTION

- Lined with three to four layers of drywall
- 60-minute Intertek verified fire rating
- Dual door seals to protect against fire and smoke

### FUNCTIONALITY

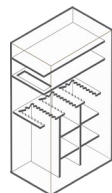
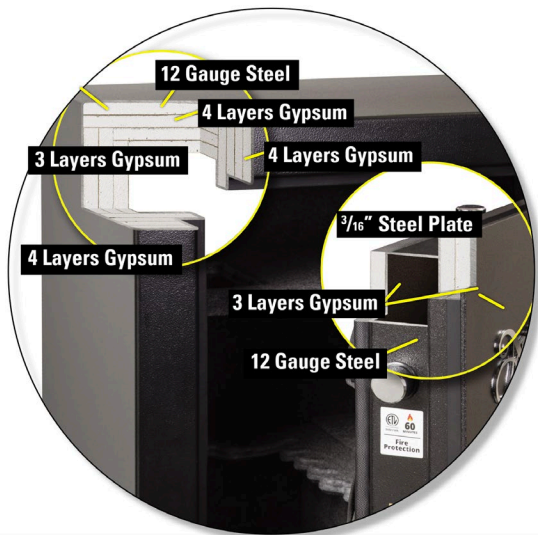
- U.L. listed ESL5 electronic lock with illuminated keypad
- Decorative three-spoke handle
- Industry's most flexible interior
- Door organizer
- Storage for two long guns on door

### COLOR(S):

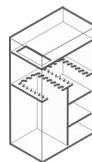
Textured black (BK) with black nickel hardware (LTN)

Dimensions listed are exterior dimensions. Add 3" to overall depth for lock and handle.

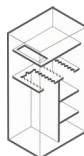
### SF SERIES CONSTRUCTION



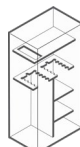
15-15-5-30-40  
GUN INTERIOR  
MODEL: SF7240E5



17-17-34  
GUN INTERIOR  
MODEL: SF6036E5



15-15-30  
GUN INTERIOR  
MODEL: SF6030E5



11-11-22  
GUN INTERIOR  
MODEL: SF6032E5



SF6032E5

Model	Outside Dimension H" x W" x D"	Inside Dimension H" x W" x D"	Door Clearance H" x W"	Door Thickness"	Body Thickness"	Interior Capacity	Weight	Lock Type
SF7240E5	72 x 40 x 26	66-½ x 36 x 19	63-½ x 31-½	3-5/8 / 3/16	2	15-15-15-30-40 + 2 Gun	1,086 lbs.	ESL5
SF6036E5	59 x 36 x 26	53-½ x 32 x 19	50-½ x 27-½	3-5/8 / 3/16	2	17-17-34 + 2 Gun	840 lbs.	ESL5
SF6030E5	59 x 30 x 26	53-½ x 26 x 19	50-½ x 21-½	3-5/8 / 3/16	2	15-15-30 + 2 Gun	748 lbs.	ESL5
SF6032E5	59 x 30 x 21	53-½ x 26 x 15	50-½ x 21-½	3-5/8 / 3/16	2	11-11-22 + 2 Gun	662 lbs.	ESL5